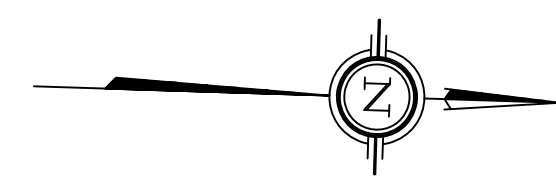
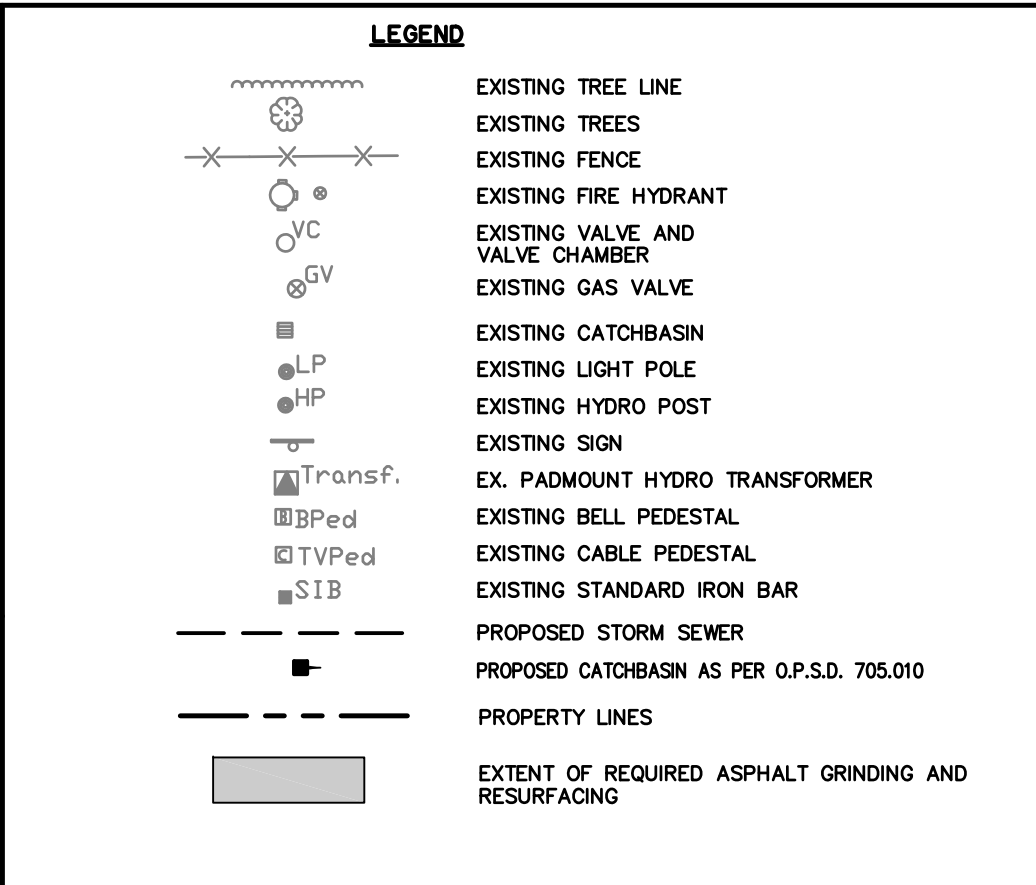
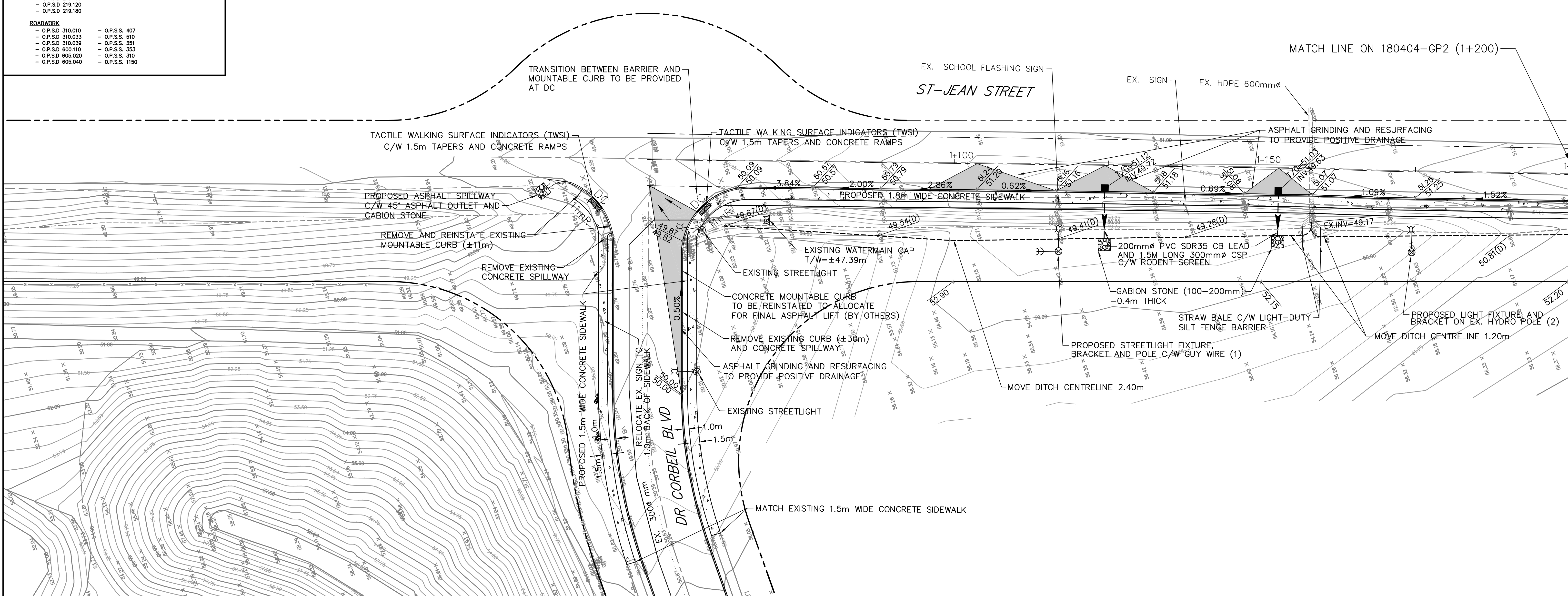


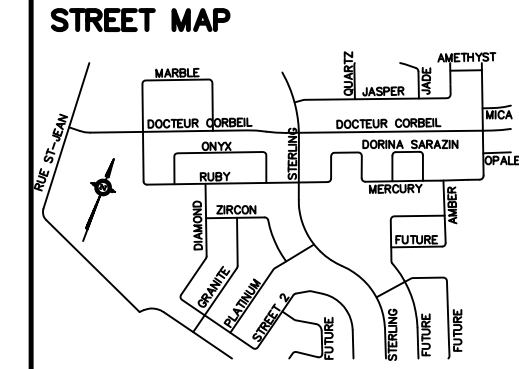
- NOTES:**
1. PROVIDE INSULATION AT CATCHBASINS IN ACCORDANCE WITH OPSS
 2. INSTALL ALL SERVICES IN ACCORDANCE WITH OPSS
 3. ALL SIDEWALKS SHALL BE HANDICAP ACCESSIBLE
 4. ROAD G'S TO BE EQUIPPED WITH 200mm ϕ LEAD TO DITCH
 5. CONTRACTOR SHALL ENSURE THAT ALL SERVICE TRENCHES ARE REINSTATED TO EXISTING CONDITIONS BY CONTRACTOR. (I.E. CULVERT CROSSINGS, DITCHES, LANDSCAPING, DRIVEWAYS, FENCES ETC.)
 6. THE EXACT LOCATION OF UTILITIES SHALL BE DETERMINED BY THE CONTRACTOR AND UTILITY COMPANIES CONCERNED.
 7. THE CONTRACTOR SHALL BE RESPONSIBLE FOR LOCATING, SUPPORTING AND PROTECTING ALL UTILITIES AND STRUCTURES EXISTING AT THE TIME OF CONSTRUCTION IN THE WORK AREA.
 8. DEPTH AND EXACT LOCATION OF EXISTING WATERMAIN TO BE CONFIRMED BY THE CONTRACTOR.



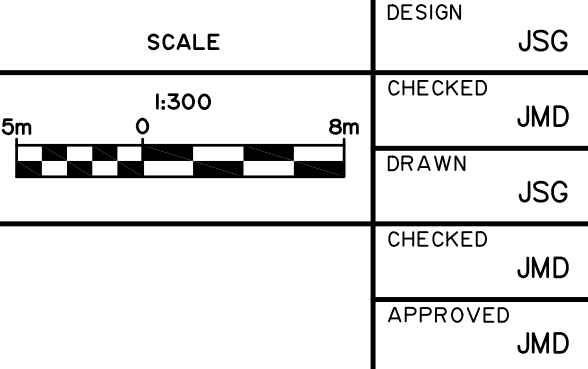
- REFER TO LATEST OPSS, OPSD**
- EROSION AND SEDIMENT CONTROL PLAN**
- O.P.S.D. 219.100 - O.P.S.S. 805
 - O.P.S.D. 219.110
 - O.P.S.D. 219.120
 - O.P.S.D. 219.180
- ROADWORK**
- O.P.S.D. 310.010 - O.P.S.S. 407
 - O.P.S.D. 310.033 - O.P.S.S. 510
 - O.P.S.D. 310.039 - O.P.S.S. 351
 - O.P.S.D. 600.110 - O.P.S.S. 353
 - O.P.S.D. 605.020 - O.P.S.S. 310
 - O.P.S.D. 605.040 - O.P.S.S. 1150



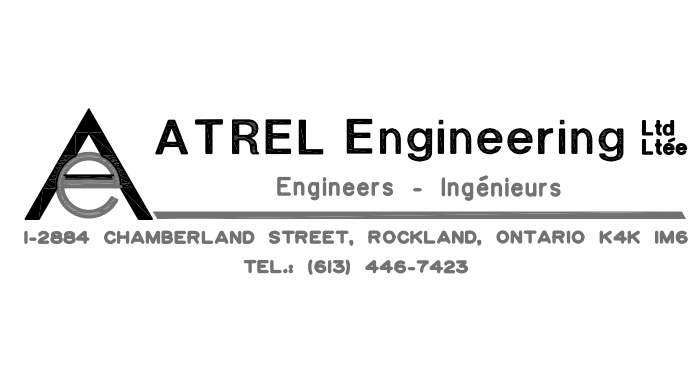
THE POSITION OF ALL POLE LINES, CONDUITS, WATERMANS, SEWERS AND OTHER UNDERGROUND AND OVERGROUND UTILITIES AND STRUCTURES IS NOT NECESSARILY SHOWN ON THE CONTRACT DRAWINGS, AND WHERE SHOWN, THE ACCURACY OF THE POSITION OF SUCH UTILITIES AND STRUCTURES IS NOT GUARANTEED. BEFORE STARTING WORK, DETERMINE THE EXACT LOCATION OF ALL SUCH UTILITIES AND STRUCTURES AND ASSUME ALL LIABILITY FOR DAMAGE TO THEM.



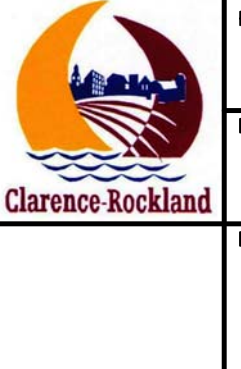
No.	REVISION	APPLIES WHEN DRAWING MODIFIED	DATE	BY



DESIGN	JSG
CHECKED	JMD
DRAWN	JSG
CHECKED	JMD
APPROVED	JMD



CITY OF CLARENCE-ROCKLAND
ST-JEAN SIDEWALK
 PLAN
GENERAL PLAN (I)



PROJECT No. 180404
 DATE MAY 2018
 DRAWING No. 180404-GPI