

## **ADDENDUM #2**

Issued: April 16, 2018  
Closing Date: Wednesday April 18, 2018  
@2:00:00pm Local Time

The following are a list of questions received from prospective bidders as well as responses.

- 1) **Question:** The Specifications show 50% and 25% bonding. Please clarify which are required for all bonds.

**Response:** Bidders shall submit Appendix D – Agreement to Bond form totalling 50%. 25% Performance Bond and 25% Labour and Materials Payment.

- 2) **Question:** Is it to be assumed that open-cut services are for homes adjacent to the new watermain and HDD services are only for services that cross the street?

**Response:** Cross street services will be installed utilizing horizontal directional drilling. Open-cut installation will be utilized for homes adjacent to the watermain.

- 3) Are thrust blocks required for open-cut works even if we utilize mechanical restraint systems as required?

**Response:** Thrust restraints and thrust blocks in accordance with Section 6.0 – SPECIAL PROVISIONS – “Item No. 5 & 6 – Supply and Install Watermain, Complete with Appurtenances”. Supply and install concrete thrust blocks for 200mm and smaller watermains at all bends, elbows, etc. and as required by the Contract Administrator with thrust restraints in accordance to applicable to OPS standards.

- 4) Are there headwalls on all the culverts at the hydrants? We are unsure what the “boxes” are at each end of the detail.

**Response:** Smooth HDPE headwalls are required at each end of the culvert as indicated.

- 5) There is a tender quantity of 67m for A03. Please clarify if this is the right quantity. I only see 1 service.

**Response:** “25mm Ø watermain service by horizontal directional drilling” is located at Civic addresses 1719, 1749 and 1876 Russell Road.

- 6) Please identify where we find the 19m in A05. Is this item correct?

**Response:** “150mm Ø watermain service by horizontal directional drilling” is located at Civic address 1235 Russell Road (Saint Francis Xavier Catholic High School). Refer to Drawing C1.3 (Rev 2).

- 7) **Question:** How are the 300mm hydrant leads that cross Russel Road paid? How are they installed (HDD vs Open-Cut)?

**Response:** Pricing for 150 mm Ø hydrant leads is to be included under the “Fire hydrant, lead & valve c/w access path” (EACH) Item. Cross street leads will be installed utilizing HDD. Open-cut installation will be utilized for hydrants adjacent to the watermain.

- 8) **Question:** Please clarify where the valves for the hydrants are paid. I count a total of 15EA 300mm valves on Russell Road.

**Response:** Hydrant valve pricing for supply and installation is covered under the ‘Fire hydrant, lead & valve c/w access path’ (EACH) item.

- 9) **Question:** Can we be provided with a link to the Clarence-Rockland Standards that are referenced?

**Response:** As per addendum 1. New Hydrant and Valve as per standard drawing City of Ottawa W20, Hydrants in Ditched Area - *Appended*.

**Question:** What size is the lead to the hydrant?

**Response:** The leads are to be 150mm Ø.

- 10) **Question:** Can you tell us what kind of pipe material is acceptable? HDPE, fusible, PVC, Terra Brute, Cobra Lock?

**Response:** HDPE conforming to AWWA C-906, DR11 ANSI-NSF 21 Certified or fusible pipe (PVC), Fusible Brute or approved equivalent conforming to AWWA C-900, Class 235, DR18 water pipe in accordance with Section 6.0 – SPECIAL PROVISIONS – “Item No. 4 – Various Size Watermain Installation by Horizontal Direction Drilling (HDD)”

- 11) **Question:** Contract specifications state that the HDPE pipe is to be blue in colour. We have spoken with several suppliers and this has never been seen. Can we assume that pipe, if HDPE, can be black in colour?

**Response:** Refer to response from question 10. Only PVC pipe is specified to be blue in colour

- 12) **Question:** Please clarify where gravel and asphalt items apply? Are tie-in location restoration paid under these items? If access pits or viewing ports encroach on the road will their restoration be paid for under the tender items?

**Response:** Granular and asphalt items apply for road reinstatement impacted by watermain connections to existing services as indicated on drawings. Access pits or viewing ports created for watermain HDD to be included under the “250mm Ø watermain by horizontal directional drilling” item for Landry road and “300mm Ø watermain by horizontal directional drilling” item for Russell Road.

- 13) **Question:** Is there a geotechnical report for this job?

**Response:** Yes. The geotechnical report was appended in Addendum #1.

- 14) **Question:** If the answer to the first question is no, what type of ground is the directional drilling expected to go through?

**Response:** Please refer to geotechnical report, appended in Addendum #1.

- 15) **Question:** Tender timeline table is saying tenders due from firms on the 17th while the front page and tender ad states April 18. Please confirm closing date of April 18.

**Response:** The deadline for tender submission is 2:00:00pm on Wednesday, April 18, 2018.

**Question:** Drawings are showing a 300x300x300mm TEE, a 300mm lead and 300mm valve to the hydrants that go across the street for Russell rd. Should this not be a 300x300x150mm TEE with a 150mm lead and valve for the hydrant services that are across the street or are we to install 300mm Tees, valves and leads and then a reducer 300x150 to install the hydrant?

**Response:** Refer to revised drawings appended. Hydrant leads to be 150mm Ø with 150mm Ø gate valves and 300x300x150mm Ø or 250x250x150mm Ø tee as indicated.

- 16) **Question:** For the access paths, will the granular B above subgrade, Granular A and paving be paid for by their respective unit rates or is everything supposed to be included with the item for "hydrants including access path"?

**Response:** Yes, pricing of Granular 'B', Granular 'A' and asphalt is included with the 'Fire hydrant, lead & valve c/w access path' (EACH) item

- 17) **Question:** Can 19mm, 25mm and 50mm services for both horizontal drilling and open cut be counted by EACH instead of by the meter as that is where the cost difference occurs. If they still want it to be priced by the meter, the meter quantities provided seem off when scaled on the drawings and could lead to misinterpretation.

**Response:** Please see revised Pricing Schedule.

- 18) **Question:** For 19mm services by drilling I count approximately 356m (18 services) and tender is asking for 300m for Russell Rd.

**Response:** There are fifteen "19mm Ø watermain services by horizontal directional drilling". Please see revised Pricing Schedule - *Appended* for updated quantity.

- 19) **Question:** For 25mm services by drilling I count approximately 22m (1 service) and tender is asking for 67m for Russell Rd.

**Response:** Please refer to Question 5 for response.

- 20) **Question:** For 50mm service by drilling I count approximately 80m (4 services) and tender is asking for 89m For Russell Rd

**Response:** Yes. There are four "50mm Ø watermain service by horizontal directional drilling" at civic address 1149, 1879, 1892 and 1909 Russell Road totaling 89m.

- 21) **Question:** For 150mm I believe it should be 34m (2 hydrant services) and tender is asking for 19m for Russell Rd (this item may also be affected because of the previous thing I brought up about the hydrant lateral should be 150mm and they appear to be 300mm right now).

**Response:** Please refer to Question 6 for response.

- 22) **Questions:** For 25mm services by open cut, tender is asking for 4m on Russell rd, I don't see any 25mm services by open cut on the drawings.

**Response:** "25mm Ø watermain service by open cut" is located at civic address 1750 Russell Road. Refer to Drawing C1.6 (Rev 2) for location.

23) Question: I Only see 12 300mm gate valves and tender is asking for 13 for Russell Rd

Response: Please refer to the revised Pricing Schedule - *Appended* for revised quantities.

24) Question: Can you please confirm the materials for the bored watermain 300mm and 250mm should be fusible PVC DR18. Specs say HDPE or PVC but also says pipes shall be blue in color. PVC is the only pipe that is blue in color.

Response: See response for Question 10.

25) Question: Is there any information about the water table for the two streets? Geotech report doesn't seem to show water level symbols on their borehole logs.

Response: Boreholes which encounter wet soil conditions is indicated in the geotechnical report borehole logs.

26) Question: Will we be allowed to use the city's active hydrants nearby, provided we install a backflow preventer, to fill up the new mains for pressure testing?

Response: Pressure testing methodology to be presented to reviewing engineer and owner prior to use of hydrants. Hydrant access is limited on a location by location basis.

27) Question: Addendum 1 was saying HDPE culverts to be installed with headwalls? Can you please provide more detail on these headwalls if there are any, as they don't seem to be shown on the drawings?

Response: Headwall inlets and outlets are to be provided for HDPE culverts as indicated on drawings. HDPE Smooth wall headwalls or an approved equivalent are to be supplied and installed.

28) Question: Specs for Bonding are saying fifty percent in words but have (25%) in brackets.. Please clarify if the performance and labor and materials bonds are for 50% or 25%.

Response: Please refer to Question 1 for response.

## **SECTION 6.0 – SPECIAL PROVISIONS**

### **ITEM NO.4 – VARIOUS SIZE WATERMAIN INSTALLATION BY HORIZONTAL DIRECTIONAL DRILLING (HDD)**

#### Products

##### Delete:

- (a) Pipe:
- i) High density polyethylene pressure pipe conforming to AWWA C-906, DR11, ANSI-NSF i) Potable watermain to be fusible pipe (PVC), Fusible Brute or approved equivalent, A.W.W.A. C-900, Class 235, DR18 watermain pipe. Pipe shall be blue in colour. Pipe shall be stamped as CSA approved, UL listed, FM approved and AWWA compliant. Pipe diameters as indicated on the Contract drawings. A representative from the pipe supplier is to be onsite for the initial installation of fusible pipe.

##### Replace With:

- (a) Pipe:
- i) High density polyethylene pressure pipe conforming to AWWA C-906, DR11, ANSI-NSF 21 certified.

## **SECTION 1.0 – INSTRUCTIONS TO BIDDERS**

### **3. Tender Timeline**

##### Delete:

<b>Event</b>	<b>Anticipated Date</b>
Request for Tender issued	27-Mar-2018
Last Day for submitting e-mail inquiries	12-Apr-2018
Tenders due from firms	17-Apr-2018 2:00pm
Municipal Council	7-MAY- 23 MAY 2018
Award of contract	25-May-2018

##### Replace With:

<b>Event</b>	<b>Anticipated Date</b>
Request for Tender issued	27-Mar-2018
Last Day for submitting e-mail inquiries	12-Apr-2018
Tenders due from firms	<b>18-Apr-2018 2:00pm</b>
Municipal Council	7-MAY- 23 MAY 2018
Award of contract	25-May-2018

### **7. Performance Security**

[Type here]

Delete: "Upon execution of the contract, the successful bidder will be required to submit Performance Security in the amount of fifty percent (25%) of the contract price AND fifty percent (25%) of the contract price as labour and materials payment security."

Replace With: "Upon execution of the contract, the successful bidder will be required to submit Performance Security in the amount of **twenty-five** percent (25%) of the contract price AND **twenty-five** percent (25%) of the contract price as labour and materials payment"

## **SECTION 7.0 – BID SUBMISSION FORMS**

### **PRICING SCHEDULE**

Delete: "Pricing Schedule" (Entire Section)

Replace With: "Pricing Schedule" (Revised Section) – *Appended*

Description: "300mm Ø gate valve" quantity revised from 13 to 5  
"250mm Ø gate valve" quantity revised from 4 to 2.  
"19mm Ø watermain service by horizontal directional drilling" quantity revised from 300m to 320m  
Replace "19mm Ø watermain by open cut" with "19mm Ø watermain service by open cut"  
Replace "25mm Ø watermain by open cut" with "25mm Ø watermain service by open cut"

## **DRAWINGS**

### **Drawing C1.3 (Rev 1), C1.6 (Rev 1), C1.12 (Rev 1)**

Delete: Drawings C1.3 (Rev 1), C1.6 (Rev 1), C1.12 (Rev 1) in its entirety.

Replace With: Drawings C1.3 (Rev 2), C1.6 (Rev 2), C1.12 (Rev 2) in its entirety.

Description: Drawings C1.3 (Rev 2) & C1.6 (Rev 2) – Replace "300mm x300mmØ TEE" with "300mmx300mmx150mmØ TEE"  
Drawings C1.3 (Rev 2) - "150mm Ø SERVICE" note added.  
Drawing C1.12 (Rev 2) – Details 7-11 Replace "NEW 300mmØ GATE VALVE" with "150mm GATE VALVE"

**END OF ADDENDUM #2**

**PRICING SCHEDULE**

The Bidder hereby bids and offers to enter into the Contract referred to and to supply and do all or any part of the Work which is set out or called for in this Bid, at the unit prices, and/or lump sums, hereinafter stated. **The Total Bid amount shall include all costs incurred, excluding taxes.**

The Bidder also understands and accepts that the quantities shown in the Bid Documents are approximate estimates only and are subject to increase, decrease or deletion entirely if found not to be required.

**Part A - Russell Road**

DESCRIPTION	QTY	UNITS	UNIT PRICE	TOTAL
Removal of existing asphalt	56	SM	\$	\$
19mm Ø watermain service by horizontal directional drilling	320	LM	\$	\$
25mm Ø watermain service by horizontal directional drilling	67	LM	\$	\$
50mm Ø watermain service by horizontal directional drilling	89	LM	\$	\$
150mm Ø watermain service by horizontal directional drilling	19	LM	\$	\$
19mm Ø watermain service by open cut	60	LM	\$	\$
25mm Ø watermain service by open cut	4	LM	\$	\$
300mm Ø watermain by horizontal directional drilling	4,388	LM	\$	\$
300mm Ø gate valve	5	EACH	\$	\$
Fire hydrant, lead & valve c/w access path	10	EACH	\$	\$
600mm culvert	90	LM	\$	\$
Rip-Rap c/w geotextile	310	SM	\$	\$
Watermain connection to existing	2	EACH	\$	\$
Granular 'A' (150mm)	40	T	\$	\$
Granular 'B' (300mm)	50	T	\$	\$
Hot Mix Asphalt HL-3 (40mm)	15	T	\$	\$
Hot Mix Asphalt HL-8 (40mm)	15	T	\$	\$
Topsoil and seed reinstatement	100	SM	\$	\$
Sediment control measures & environmental protection	1	LS	\$	\$



Traffic control	1	LS	\$	\$
Lump sum for other requirements (Bonding, insurance, permit fees, utility pole bracing/holding, etc.)	1	LS	\$	\$
<b>TOTAL PART A</b>				\$

Part B - Landry Road

DESCRIPTION	QTY	UNITS	UNIT PRICE	TOTAL
Removal of existing asphalt	70	SM	\$	\$
Removal of curb and gutter	7	LM	\$	\$
19mm Ø watermain service by horizontal directional drilling	271	LM	\$	\$
25mm Ø watermain service by horizontal directional drilling	47	LM	\$	\$
19mm Ø watermain by open cut	70	LM	\$	\$
250mm Ø watermain by horizontal directional drilling	1,750	LM	\$	\$
250mm Ø gate valve	2	EACH	\$	\$
Fire hydrant, lead & valve c/w access path	4	LM	\$	\$
600mm culvert	14	LM	\$	\$
Rip-Rap c/w geotextile	124	SM	\$	\$
Watermain connection to existing	2	EACH	\$	\$
Curb and gutter reinstatement	7	LM	\$	\$
Granular 'A' (150mm)	40	T	\$	\$
Granular 'B' (300mm)	50	T	\$	\$
Hot Mix Asphalt HL-3 (40mm)	15	T	\$	\$
Hot Mix Asphalt HL-8 (40mm)	15	T	\$	\$
Topsoil and seed reinstatement	50	SM	\$	\$
Sediment control measures & environmental protection	1	LS	\$	\$
Traffic control	1	LS	\$	\$
Lump sum for other requirements (Bonding, insurance, permit fees, utility pole bracing/holding, etc.)	1	LS	\$	\$
<b>TOTAL PART B</b>				\$





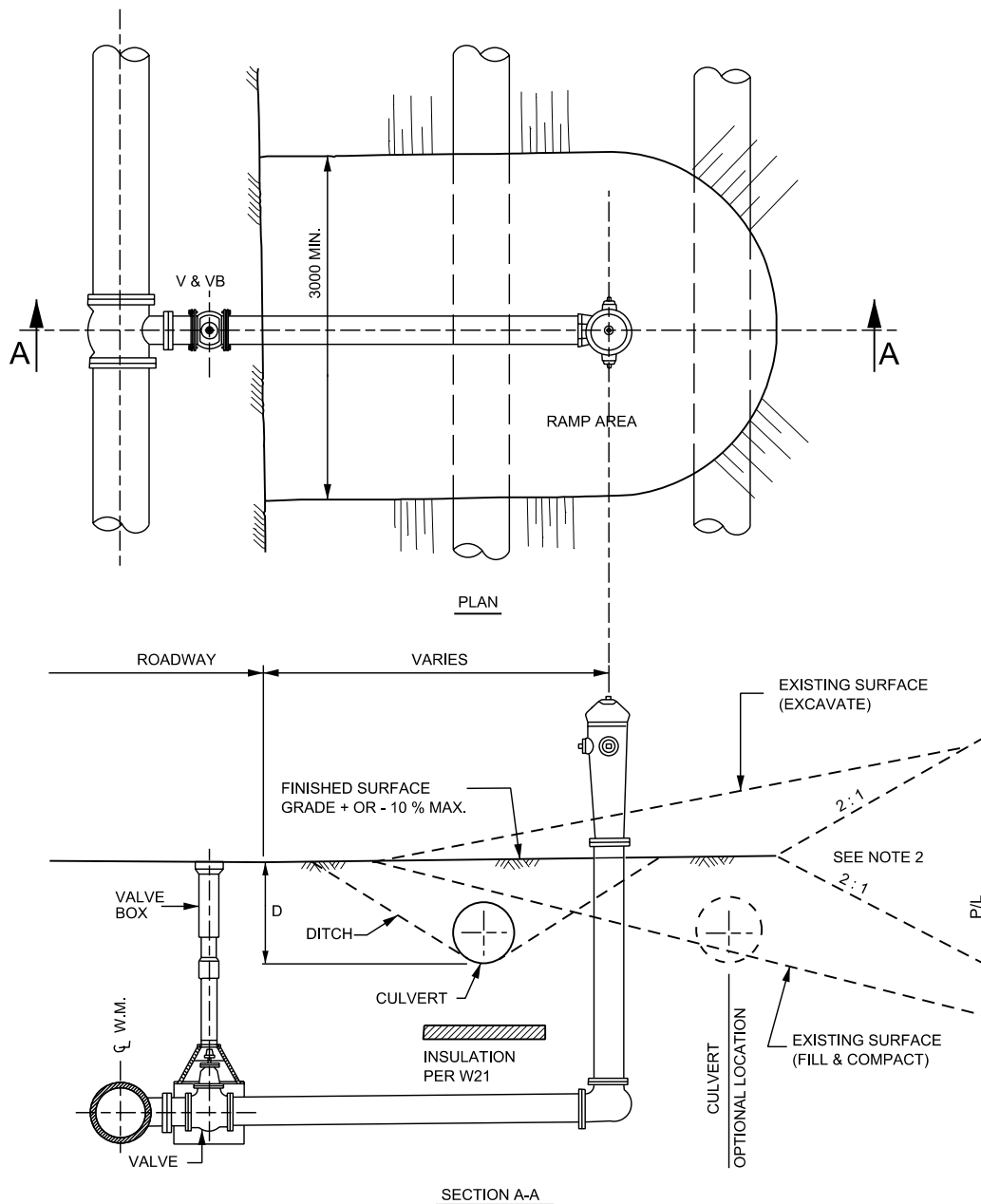
Payment Schedule Summary

<b>Total for Part A – Russel Road</b>	\$
<b>Total for Part B – Landry Road</b>	\$
<b>Total for Part C – Provisional Items</b>	\$
<b>(Transfer to page 75, Bid Submission form) TOTAL</b>	\$
	/100
<i>Insert Dollars in words above</i>	

**Prompt Payment Discount:**

The City of Clarence-Rockland follows a policy whereby in the absence of prompt payment discount terms, all invoices from vendors will be paid on a Net 30 basis; that is payments will be made by the City within 30 days of receipt of invoice, or the acceptance of the goods and services, whichever date is later.

A Prompt Payment Discount of \_\_\_\_\_% is offered by the proponent for payment within (15) fifteen working days, following receipt by the City of the invoice, or receipt and acceptance of the goods and services, whichever date is later, in the sole opinion of the City.



**NOTES**

FOR ALL WATERMAINS.

1. SEE DETAIL W19 FOR HYDRANT INSTALLATION.
2. WHERE SLOPES SURROUNDING RAMP AREA EXCEED 2:1, STONE RIP-RAP SHALL BE PLACED.
3. CULVERT LENGTH SHALL BE MINIMUM  $4000\text{mm} + (2 \times D \times S)$  WHERE D IS THE DITCH DEPTH AND THE SIDE SLOPE IS DEFINED AS S:1.
4. CULVERT SHALL BE AS PER S26.
5. ALL DIMENSIONS ARE IN MILLIMETRES UNLESS SHOWN OTHERWISE.
6. CULVERT INVERT SHALL BE 75mm TO 150mm BELOW DITCH BOTTOM

N.T.S.



**HYDRANTS IN DITCHED AREA**

DATE: MAY 2001

REV. DATE: MARCH 2011

DWG. No.: W20